

1 inch = 40000 feet



EMF GEOSCIENCE

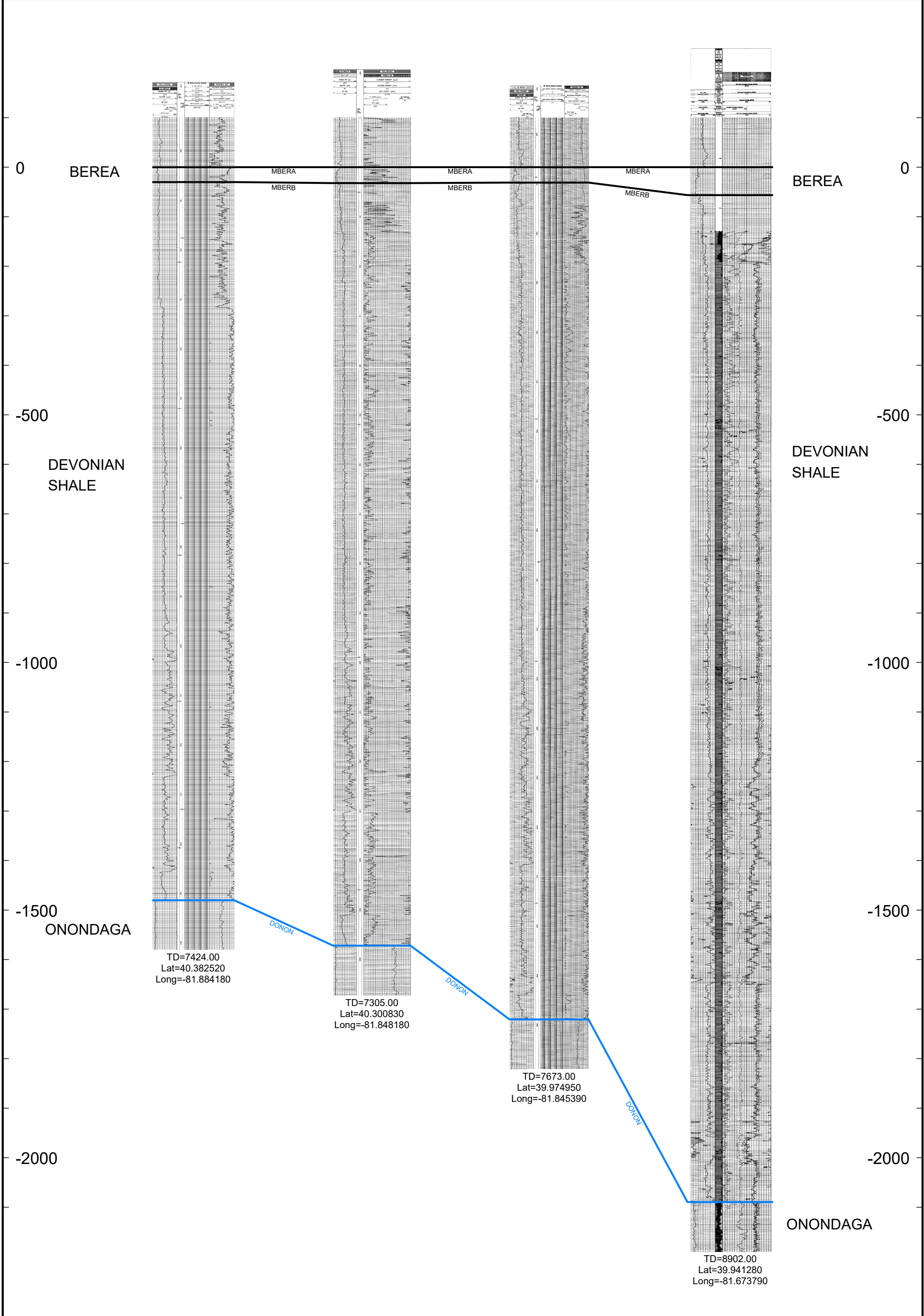
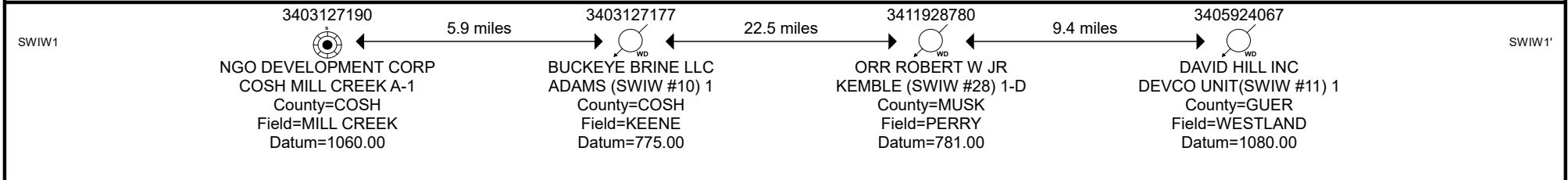
**CROSS SECTION
BASE MAP
OHIO**

PREPARED BY: EMF
GEOSCIENCE

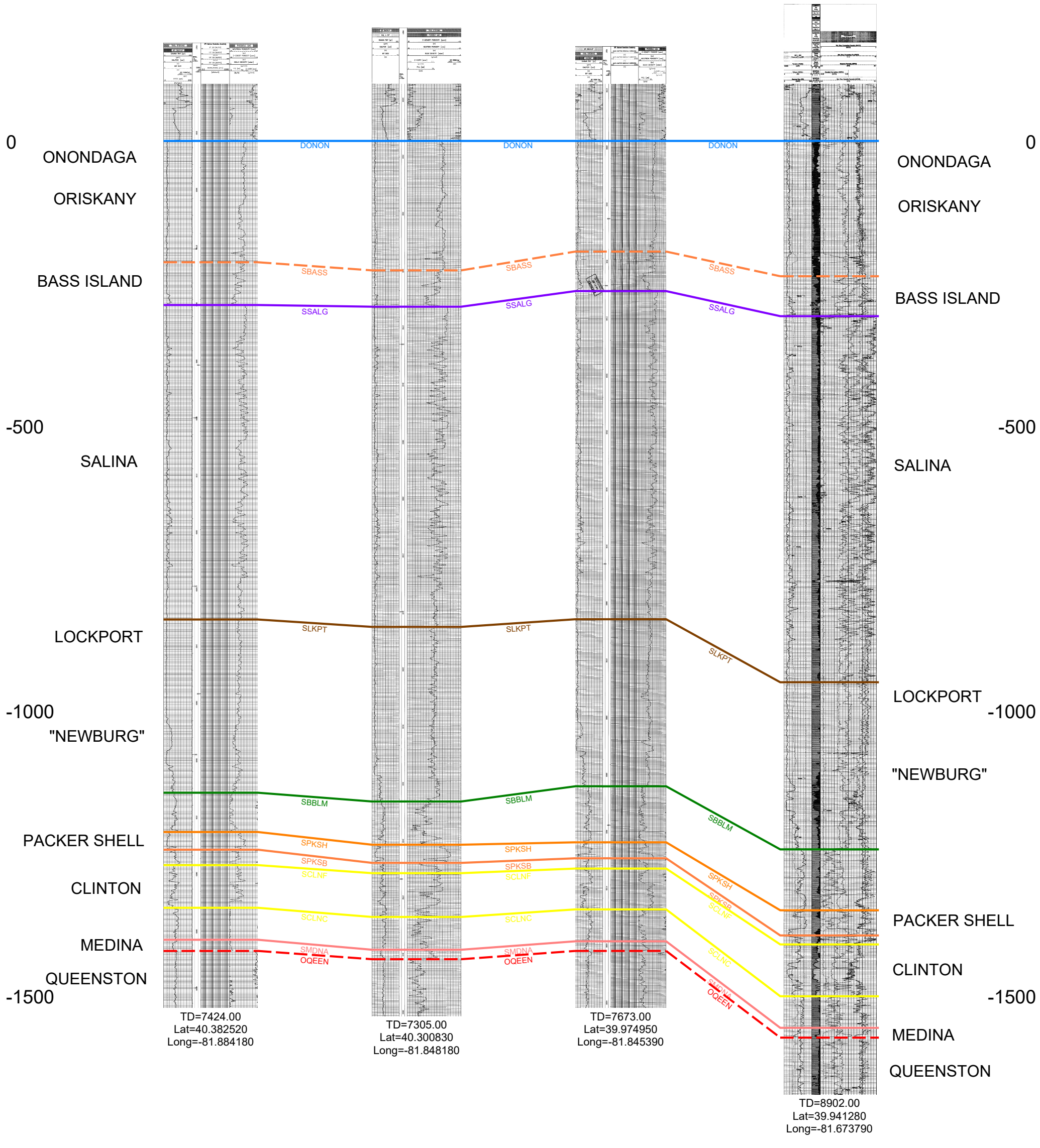
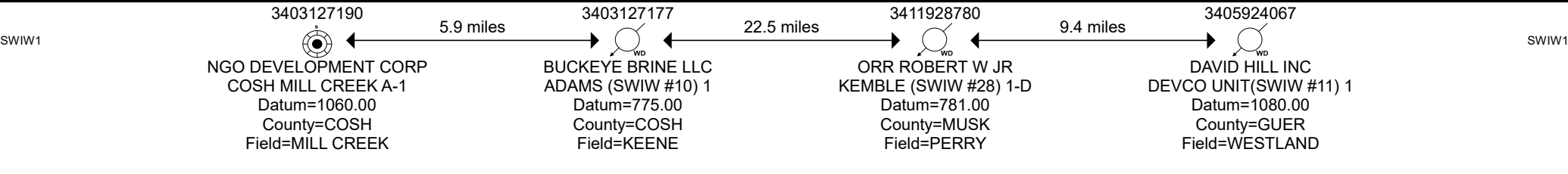
Date:
17 September, 2021

Scale:
1 IN = 40,000 FT

Stratigraphic Cross Section "BEREA TO ONONDAGA" : Equally Spaced Logs
 Datum = BEREA TOP
 Vertical Scale = 1 in per 100 ft

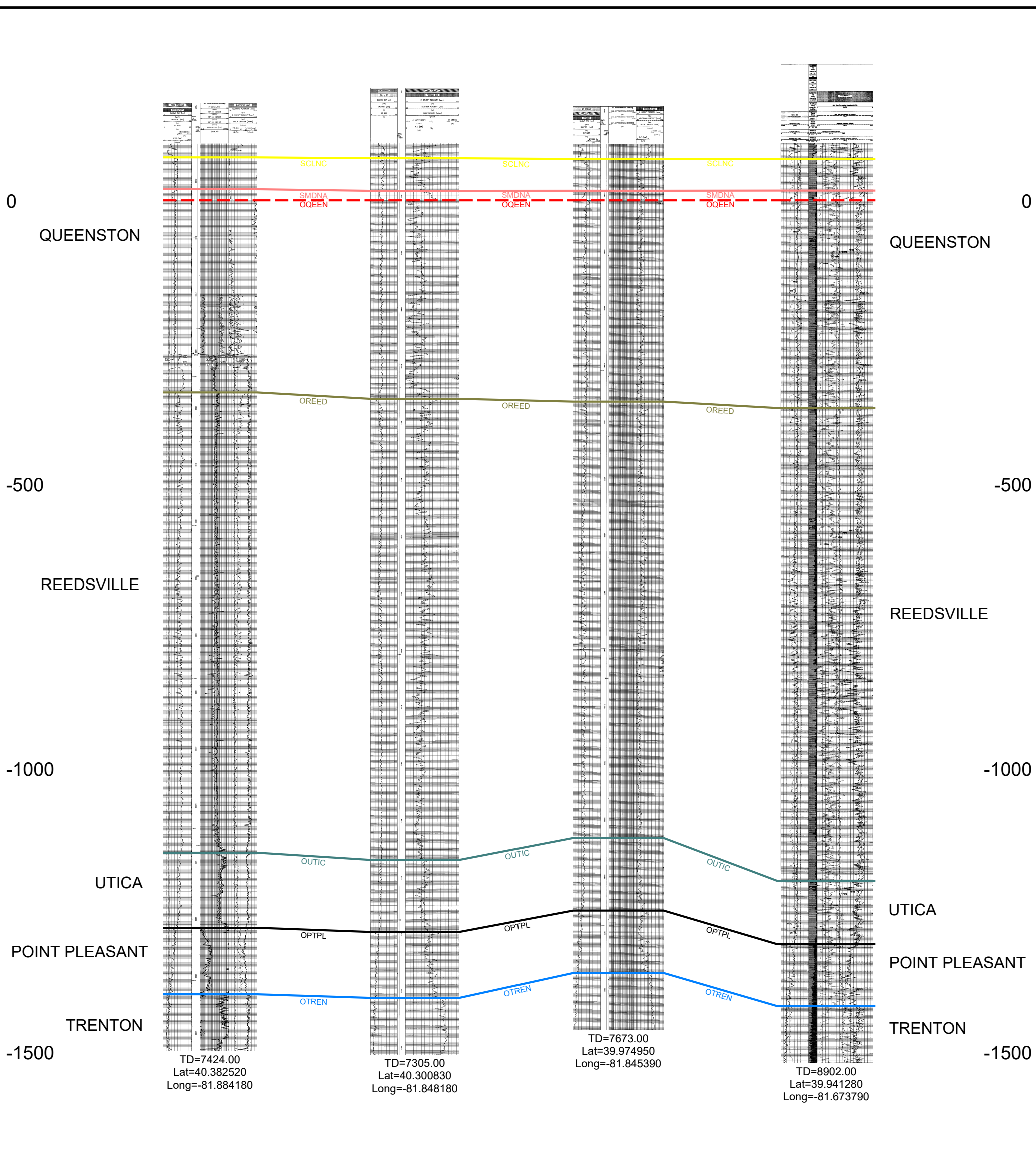
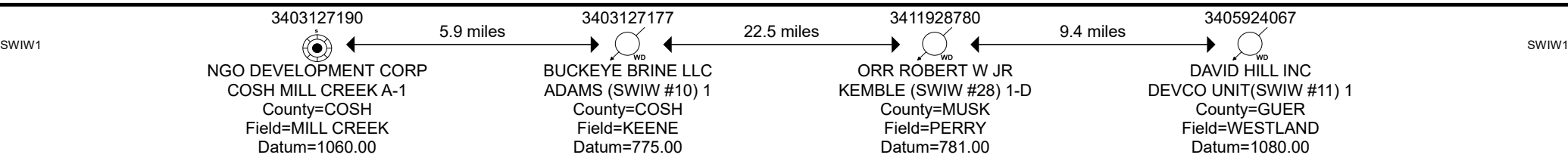


Stratigraphic Cross Section "ONONDAGA TO QUEENSTON" : Equally Spaced Logs
 Datum = ONONDAGA
 Vertical Scale = 1 in per 100 ft



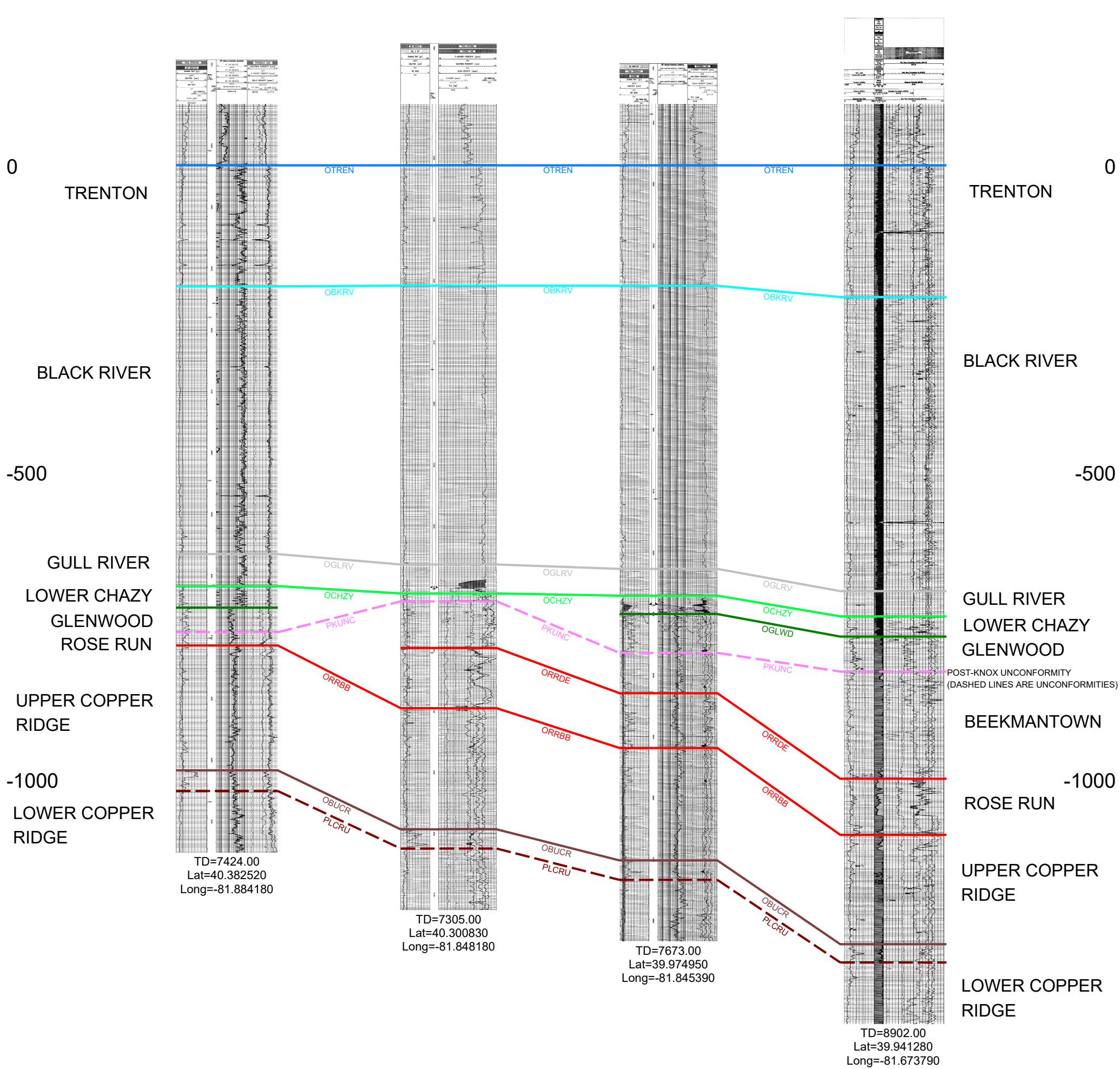
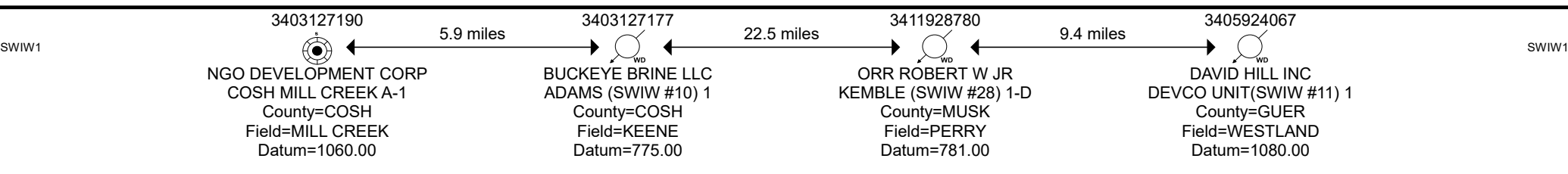
Stratigraphic Cross Section "QUEENSTON TO TRENTON" : Equally Spaced Logs

Datum = QUEENSTON
Vertical Scale = 1 in per 100 ft



Stratigraphic Cross Section "TRENTON TO LOWER COPPER RIDGE" : Equally Spaced Logs

Datum = TRENTON
Vertical Scale = 1 in per 100 ft



NOTE: INJECTION ZONE "KNOX" = UPPER COPPER RIDGE + ROSE RUN + BEEKMANTOWN

Stratigraphic Cross Section "LOWER COPPER RIDGE TO MT SIMON" : Equally Spaced Logs
 Datum = LOWER COPPER RIDGE
 Vertical Scale = 1 in per 100 ft

